

## SECTION 2 - CTS Modular Products e-mod



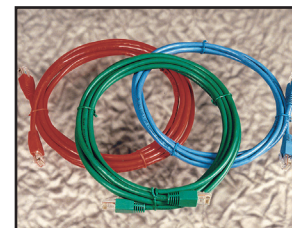
### e-mod CAT5E PATCH LEADS

24 AWG RJ45-RJ45 booted patchleads, individually packaged, available in 7 different colours.

- 0.5 metre
- 1.0 metre
- 2.0 metre
- 3.0 metre
- 5.0 metre
- 10.0 metre
- 15.0 metre

Order Ref

- DC 5E022
- DC 5E023
- DC 5E024
- DC 5E025
- DC 5E026
- DC 5E 027
- DC 5E 028



When ordering patch leads using order ref, please add appropriate colour code to end of order ref.

BL=blue, R=red, Y=yellow, GR=green, GY=grey, BLK=black

e.g. 2 metre green patchlead would be order ref: DC 5E024GR

Non-standard lengths also available (e.g. 1.5 mtr/6mtr/8mtr/12/mtr/20mtr/25mtr. etc) please call sales office with your requirements for a quotation by return.

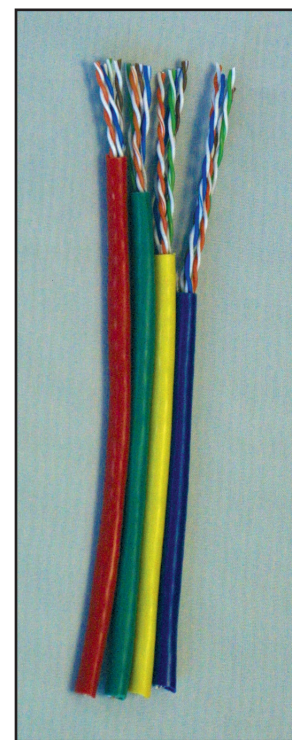
### e-mod CAT6 PATCH LEADS

24 AWG RJ45-RJ45 booted patchleads, individually packaged, available in 7 different colours.

- 0.5 metre
- 1.0 metre
- 2.0 metre
- 3.0 metre
- 5.0 metre

Order Ref

- DC 6 022
- DC 6 023
- DC 6 024
- DC 6 025
- DC 6 026



### e-mod CABLE

- 4 pair, UTP, 24 awg, solid conductor, 305 metre box, grey
- 4 pair, UTP, 24 awg, solid conductor, 305 metre box, green
- 4 pair, UTP, 24 awg, solid conductor, 305 metre box, yellow
- 4 pair, UTP, 24 awg, solid conductor, 305 metre box, red
- 4 pair, UTP, 24 awg, solid conductor, 305 metre box, blue
- 4 pair, UTP/LSF, 24 awg, solid conductor, 305 metre box
- 4 pair, UTP/EXTERNAL, 24 awg, solid conductor, 500 or 1000 metre reel
- 25 pair, UTP/EXTERNAL, 24 awg, solid conductor, cut to length  
(external cable cut to length if required)

Order Ref

- C 033CTS
- C 033GN
- C 033Y
- C 033R
- C 033BL
- C 033CTLSF
- C 033G1
- C 033I



**PRIORITY FAXLINE - 01733-344775**